



Science, technology and innovation



CSIC

CONSEJO SUPERIOR DE INVESTIGACIONES CIENTÍFICAS



**UNIVERSITAT
POLITÈCNICA
DE VALÈNCIA**

About us



Founded in November 1999, INGENIO has conducted twenty years of research on the complex relationships between science, technology, innovation and society. INGENIO aims to undertake high quality and socially relevant research that advances knowledge and contributes to addressing societal challenges. To achieve these dual objectives, INGENIO is organized as a multidisciplinary research centre that recognizes and fosters the advantages of collaborative knowledge production to address complex scientific and socio-economic problems. For this reason, INGENIO actively seeks to engage and work with a diverse range of academic, industry and civil society partners.

INGENIO (CSIC-UPV) is a joint research centre of the Spanish National Research Council (CSIC) and the Universitat Politècnica de València (UPV).

INGENIO is committed to continuing its engagement in local, regional, national and international activities to foster:

- Collaborative research and networking.
- Creation of inclusive spaces for dialogue and opportunities for collective research and innovation activities.
- Quality research training and support for Masters and Doctoral students.
- Cultivation of cultures of responsibility and sustainability in research and innovation.

Our research

POLICY DESIGN

Research and innovation policies are currently facing serious challenges regarding the new ways of generating and applying knowledge, the incorporation of new actors and stakeholders into scientific and innovation activities, and the necessary alignment between scientific activities and the urgent needs of today's society. INGENIO tackles these issues by using new analytical approaches to develop and assess research and innovation policies.

EDUCATION, EMPLOYMENT & SKILLS

Technology and globalization are profoundly changing the world of employment. Furthermore, the age in which we are living has opened up a wide range of both opportunities and challenges in employment, job quality, skills, income distribution and inequality. These imbalances will require increasing changes in companies, education systems, the design of public policies, and in citizen decision-making. INGENIO analyzes the determinants and socio-economic consequences of these transformations taking place in the labor market.

TERRITORIAL INNOVATION & ORGANIZATIONAL CAPACITIES

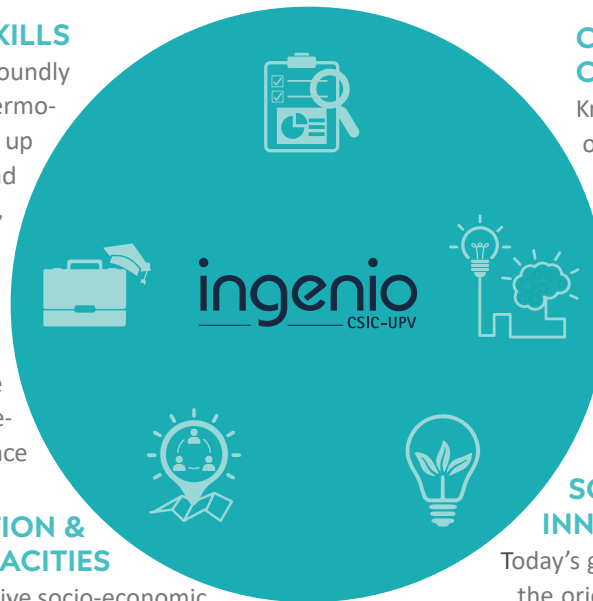
Knowledge intensive industries and innovative socio-economic activities tend to cluster in cities, creative hubs and high-tech zones. This can generate territorial disparities and the need for local and regional strategies to generate learning opportunities, link to existing hubs and value chains, and build on local strengths and opportunities. INGENIO contributes to the debate on the challenges for peripheral areas in Europe, and to addressing the need for coordinated and appropriate knowledge and innovation strategies at local and regional levels in Spain.

COLLABORATION & KNOWLEDGE CO-CREATION

Knowledge generation and application depend on the exchange of knowledge among different social actors performing under different rationales. INGENIO studies the growing relevance of cooperative and inclusive practices in research, the co-creation of knowledge with particular emphasis on collaborative relationships between academic and non-academic actors, and of transdisciplinary research.

SOCIAL AND ENVIRONMENTAL INNOVATION FOR SUSTAINABILITY

Today's global challenges demand that we reconsider the orientation of our innovation processes beyond their purely technological or economic dimensions. In this respect, INGENIO analyzes the meaning and role of responsible research and innovation, as well as how innovation processes contribute towards creating sustainable socio-economic models and achieving more inclusive societies.



Our capabilities

Independence and constructive engagement are at the heart of everything we do. We engage through informal interactions, specific project-based activities, and enduring partnerships and collaborative relationships.

NEW RESEARCH

We undertake exploratory investigation and discovery-driven programmes and projects in our main research areas. These are built on the topics of specialization and diverse disciplinary expertise of our core researchers. We also seek to advance existing knowledge in these areas, particularly to broaden the scope of their potential application and societal impact.

MULTI-PARTNER RESEARCH COLLABORATION

Focused on specific research challenges, our collaborations involve partners from academia, industry, government and society. Collaborations range from small locally oriented projects to large European Framework Programme consortia.

CIVIC RESEARCH PARTNERSHIPS

We partner with civil society organisations to work on research approaches and social innovation projects over a number of years. These are informal and formal partnerships that are designed to meet the needs of specific partner organisations or populations.

CONSULTING

Usually formal arrangements with a relatively short time-frame and a specific output required, such as a *programme* or project evaluation, a review or report, or the provision of policy advice.

TRAINING

We host international research students from all corners of the world in a well-resourced, inclusive and collegial environment. We participate in and provide access to European networks of researcher mobility, training and career development.

Scientific and innovation activities 2019

COMMEMORATIVE ACTIVITIES SCHEDULED FOR 2019

